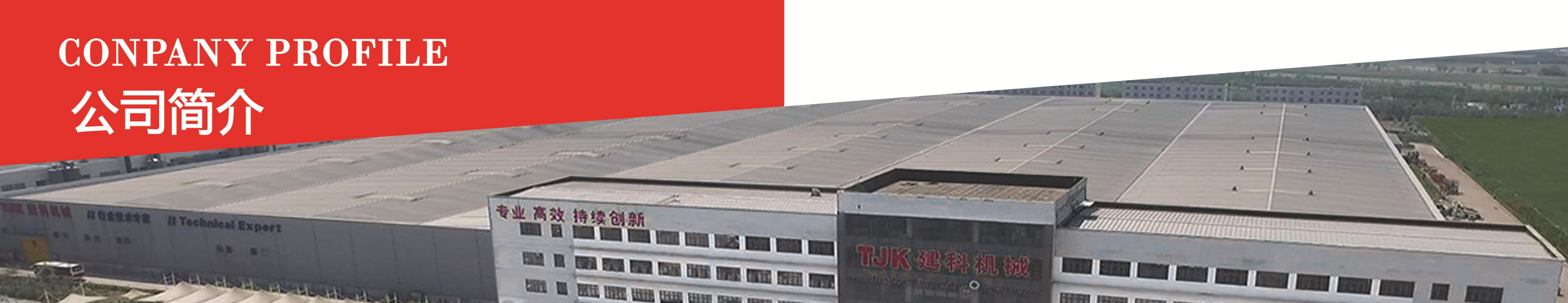


COMPANY PROFILE

公司简介



This is a watermark for the trial version, register to get the full one!

Benefits for registered users:

- 1.No watermark on the output documents.
- 2.Can operate scanned PDF files via OCR.
- 3.No page quantity limitations for converted PDF files.

[Remove Watermark Now](#)

TJK
建科机械

公司以“中国制造”为己任，坚持走自主创新之路，不断调整产品结构，创造出了拥有自主知识产权的智能化钢筋加工机器人装备和配套软件。目前公司持有有效专利三百多项，其中发明专利占比近60%；参与制定国家及行业标准15项。先后获得了国家火炬计划重点高新技术企业、全国企业知识产权试点单位、天津市优秀科技小巨人企业、天津市著名商标、天津市名牌产品、多项产品荣获天津市科技进步奖并参与承担科技部科技支撑项目。

2013年公司荣登“2013年福布斯中国非上市公司最具潜力企业100强”第43位。经过十多年的发展，公司已成长为行业内的领先企业之一。

公司位于陆路港物流装备产业园区的厂区，占地240亩，建筑面积10万平方米，是目前全球最大智能化钢筋加工装备研发及生产的基地。

未来公司将全面推动产业发展和行业升级，打造钢筋加工装备世界技术领先企业。

建科机械（天津）股份有限公司创建于2002年，注册资金7015万元，主要从事中高端数控钢筋加工装备的研发、设计、生产和销售，并提供数控钢筋加工的整体解决方案。公司产品广泛用于高速铁路、高速公路、桥梁隧道、轨道交通、地下管廊、核电水电等各类大型基础设施建设及装配式建筑、钢筋加工配送中心等领域。

公司与中国中铁、中国铁建、中国建筑、中国交建、中国核建、远大住工等国内多家大型企业建立了长期业务关系，同时还出口韩国、马来西亚、泰国、哈萨克斯坦、以色列、南非等近100个国家和地区，在国内同行业中处于较领先的地位。

TJK
MACHINERY

TJK is the largest manufacturer in reinforcing steel and wire processing machinery in China.

TJK Machinery was founded in 1993, and was registered as a corporation company in 2002, we became public company in 2012.

Based on our industrial experiences and professional engineering team,

ing industry clients. TJK owns independent intellectual rights registered over 300 technical patents, which have further strengthened

TJK leading position in reinforcement processing industry. Now this most grand and modern new factory is the 4th one during the years, which covers an area of 270,000m² 1000 staffs. TJK has over 80% China market share, and all of our products have passed quality certification of ISO9001-2008 system, TUV and CE certificate and sold well in more than 90 countries. TJK is listed on FORBES Annual Ranking of China Up-and-Comers.

发展历程

DEVELOPMENT HISTORY

简单的开始 SIMPLE BEGINNING

2002年, 天津市建科机械制造有限公司正式成立

钢筋调直切断机研制成功

钢筋网焊接生产线研制成功

2004年, 钢筋网焊接生产线研制成功

钢筋网焊接生产线研制成功

2006年, 钢筋桁架生产线研制成功 (全国首创)

2007年, 钢筋桁架生产线研制成功

2008年, 钢筋桁架生产线研制成功 (国内首创)

2010年, 可旋转式钢筋弯箍机研制成功 (国内首创)

2012年, 钢筋剪网机、弯网机研制成功

2012年, 钢筋乱尺分选机研制成功 (国内首创)

2014年, 钢筋复合加工中心研制成功 (国内首创)

2015年, 智能钢筋开孔网焊接生产线研制成功 (国内首创)

2016年, 三维智能钢筋弯箍机器人研制成功 (国内首创)

2017年, 智能钢格构焊接机器人GRID400 (国内首创)

2018年, 智能钢筋锯切滚丝机器人

全国首创

2008年

This is a watermark for the trial version, register to get the full one!

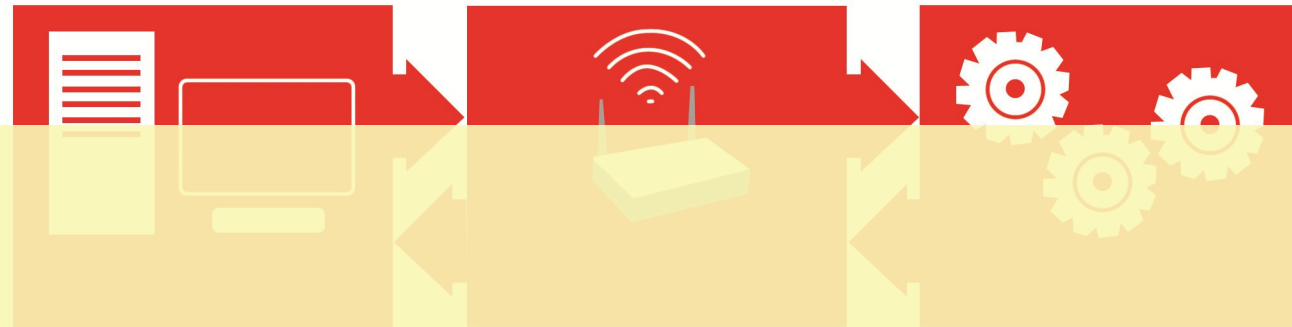
Benefits for registered users:

- 1.No watermark on the output documents.
- 2.Can operate scanned PDF files via OCR.
- 3.No page quantity limitations for converted PDF files.

Remove Watermark Now

MES系统：工厂资源的全面整合、全程管控

TJK EP 钢筋加工配送管理系统



从订单到成品

销售制定销售单



This is a watermark for the trial version, register to get the full one!

Benefits for registered users:

- 1.No watermark on the output documents.
- 2.Can operate scanned PDF files via OCR.
- 3.No page quantity limitations for converted PDF files.

Remove Watermark Now

从原料采购到仓库

计划根据生产加工任务生成物料需求



MES(Manufacturing Execution System)是全面整合制造资源、全方位管理生产进度、质量、设备和人员绩效的制造业生产管理思想和管理工具，是一套面向制造业的、可执行的制造协同管理平台。MES系统设置了必要的接口，与提供生产现场控制设施的厂商建立合作关系。



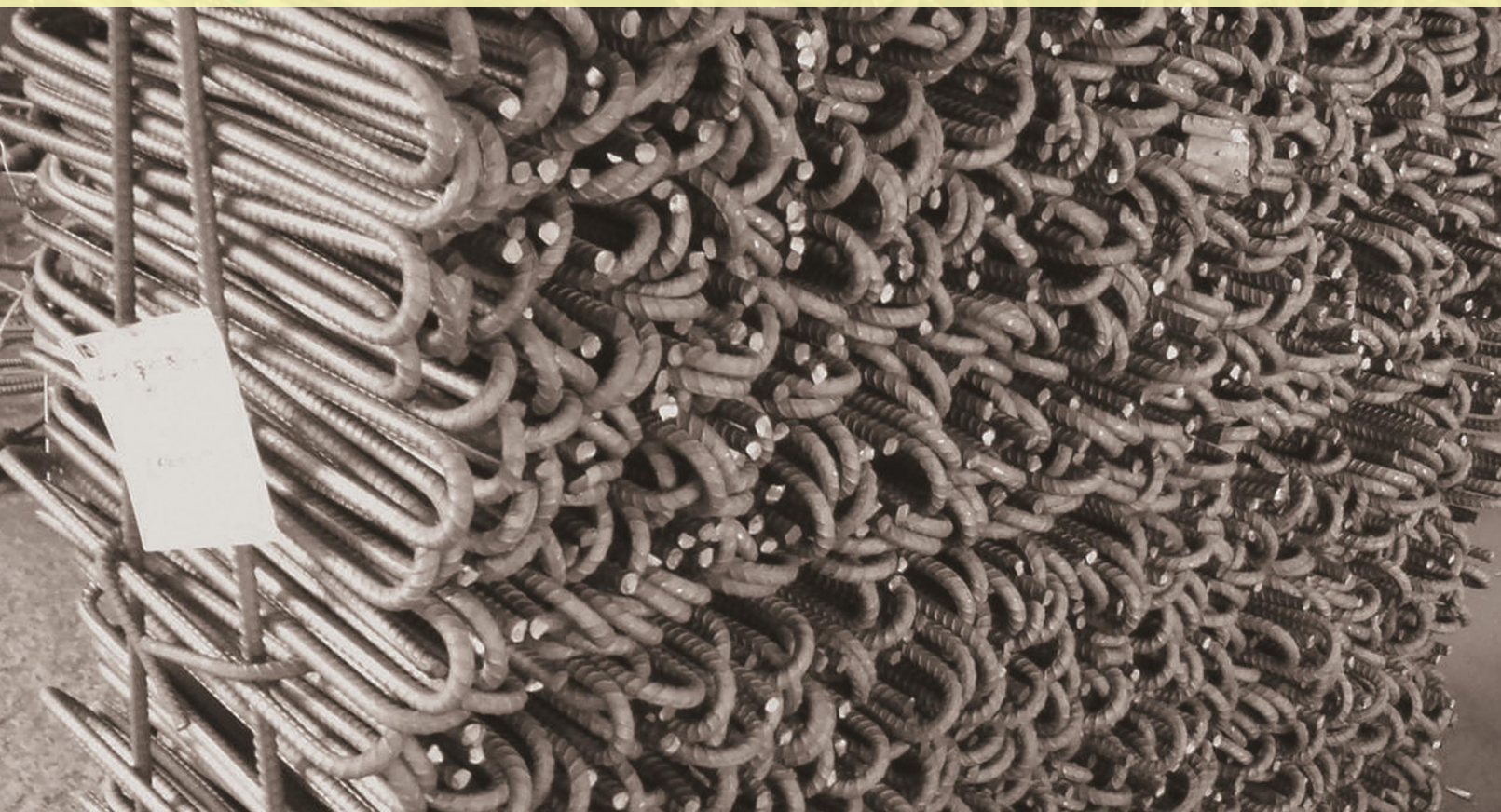
辅助设备

This is a watermark for the trial version, register to get the full one!

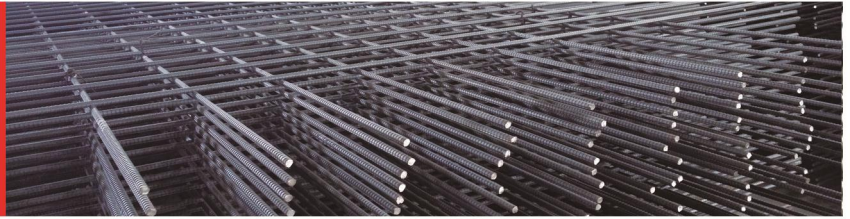
Benefits for registered users:

- 1.No watermark on the output documents.
- 2.Can operate scanned PDF files via OCR.
- 3.No page quantity limitations for converted PDF files.

Remove Watermark Now



液压钢筋剪网机
Mesh Cutter



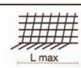
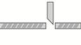




This is a watermark for the trial version, register to get the full one!

Benefits for registered users:

- 1.No watermark on the output documents.
- 2.Can operate scanned PDF files via OCR.
- 3.No page quantity limitations for converted PDF files.

[Remove Watermark Now](#)



		MC3000Y	MC6000Y
	最大网宽 Working width	3.0 m	6.2 m
	钢筋剪切直径 Cutting capacity	Ø12 mm	Ø12 mm
	作业循环时间 Working cycle	6 sec	8 sec
	电力需求 Installed power	7.5 kW	11 kW
	设备尺寸 Machine dimension	3,860 × 1,800 × 1,800 mm	6,860 × 1,800 × 1,800 mm
	设备重量 Machine weight	2,500 kg	4,200 kg

移动剪刀式钢筋剪网机
Mesh Cutter



This is a watermark for the trial version, register to get the full one!

Benefits for registered users:

- 1.No watermark on the output documents.
- 2.Can operate scanned PDF files via OCR.
- 3.No page quantity limitations for converted PDF files.

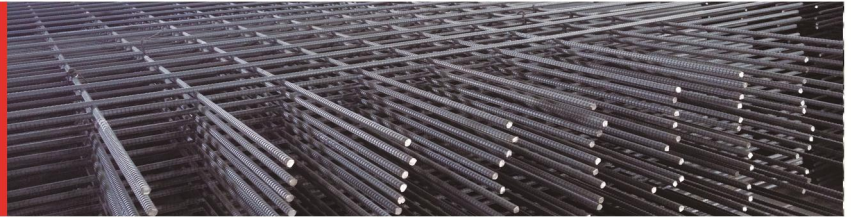
Remove Watermark Now



MC6000D

	最大网宽 Working width	6.0 m
	钢筋剪切直径 Cutting capacity	Ø12 mm
	作业循环时间 Working cycle	6 sec
	电力需求 Installed power	3.85 kW
	设备尺寸 Machine dimension	7,250 × 1,650 × 1,750 mm
	设备重量 Machine weight	2,200 kg

液压钢筋弯网机
Mesh Bender


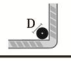
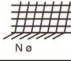
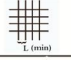
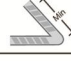
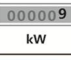




This is a watermark for the trial version, register to get the full one!

Benefits for registered users:

- 1.No watermark on the output documents.
- 2.Can operate scanned PDF files via OCR.
- 3.No page quantity limitations for converted PDF files.

[Remove Watermark Now](#)

		MB3000	MB6000
	最大网宽 Working width	3.0 m	6.0 m
	弯曲钢筋直径 Bending capacity	Ø12 mm	Ø12 mm
	最大钢筋根数 Max. bars nº	30	60
	最小网距 Min. mesh opening	50 mm	50 mm
	最小抽头 Min. length of square stirrup side	120 mm	120 mm
	电力需求 Installed power	11 kW	11 kW
	设备尺寸 Machine dimension	3,000 × 1,400 × 1,400 mm	6,000 × 1,400 × 1,400 mm
	设备重量 Machine weight	2,000 kg	2,500 kg



WH40B

**钢筋液压弯弧机
Spiral making machine**

型号 MODEL	WH40B
钢筋直径 Bar diameter	40[mm]
功率 Power	7.5[Kw]
重量 Weight	400[Kg]
尺寸 Dimension	1720*1110*1260 [mm]

This is a watermark for the trial version, register to get the full one!

Benefits for registered users:

- 1.No watermark on the output documents.
- 2.Can operate scanned PDF files via OCR.
- 3.No page quantity limitations for converted PDF files.

Remove Watermark Now

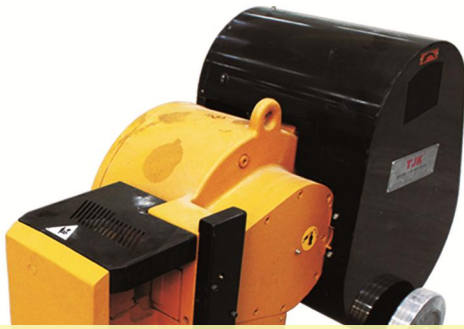
WH12

**钢筋螺旋弯圆机
Spiral making machine**

型号 MODEL	WH12
钢筋直径 Bar diameter	12[mm]
功率 Power	3.7[Kw]
重量 Weight	320[Kg]
尺寸 Dimension	1720*1110*1260[mm]



工地现场用机器
Job Site Machine



GQ55

钢筋切断机
Rebar Cutter

型号 MODEL	GQ55
最大切割直径 Max. Diameter	40[mm]/HRB400
功率 Power	4[Kw]
重量 Weight	850[Kg]
尺寸 Dimension	1100*690*950[mm]

This is a watermark for the trial version, register to get the full one!

Benefits for registered users:

- 1.No watermark on the output documents.
- 2.Can operate scanned PDF files via OCR.
- 3.No page quantity limitations for converted PDF files.

Remove Watermark Now

GW36

钢筋弯曲机
Rebar Bender

型号 MODEL	GW36				
弯曲数量 Number	1	2	3	4	5
弯曲钢筋直径 Diameter	22-36	18-20	16 [HRB400]	12	10
功率 Power	4 [Kw]				
重量 Weight	545[Kg]				
尺寸 Dimension	980x800x875[mm]				



吊具 放线架 收箱机

Lifting Devices & Pay-offs



This is a watermark for the trial version, register to get the full one!

Benefits for registered users:

- 1.No watermark on the output documents.
- 2.Can operate scanned PDF files via OCR.
- 3.No page quantity limitations for converted PDF files.

[Remove Watermark Now](#)



FX 16F



FX 12F



SG 3